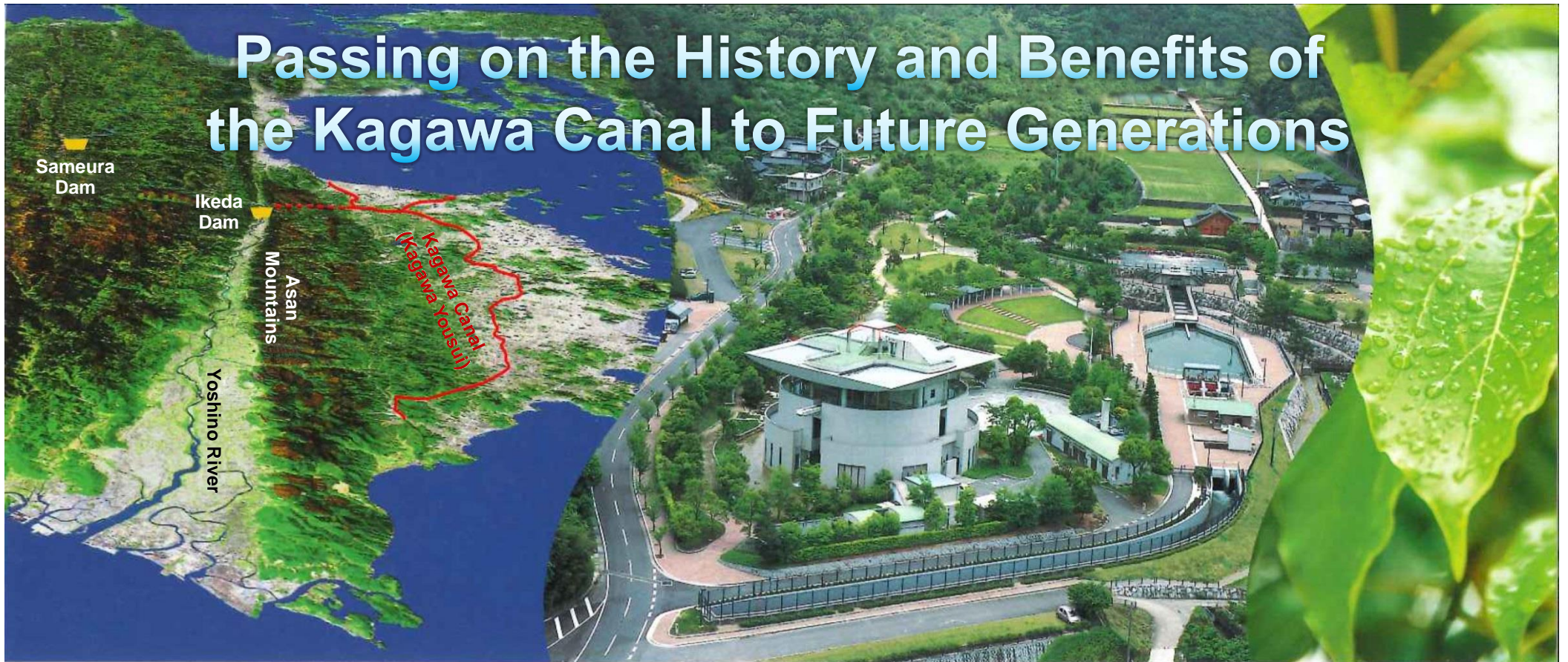


Passing on the History and Benefits of the Kagawa Canal to Future Generations



Kagawa Yousui Commemorative Park

Bird View of Kagawa Yousui Commemorative Park



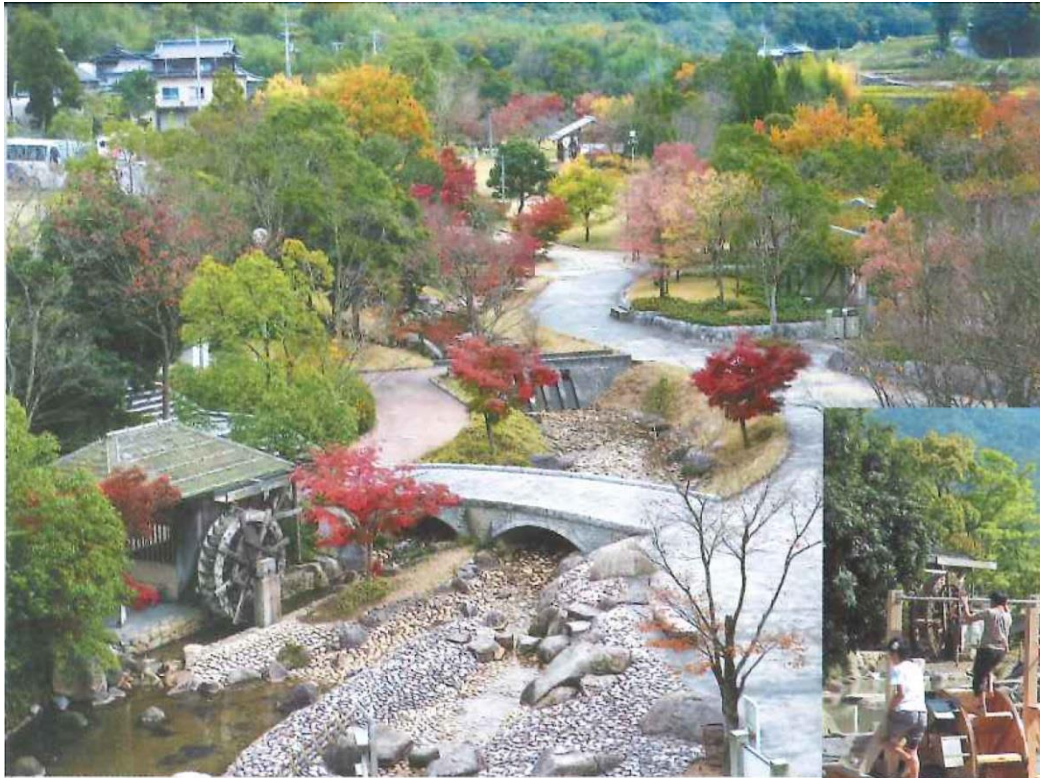
Water Museum

Admission free

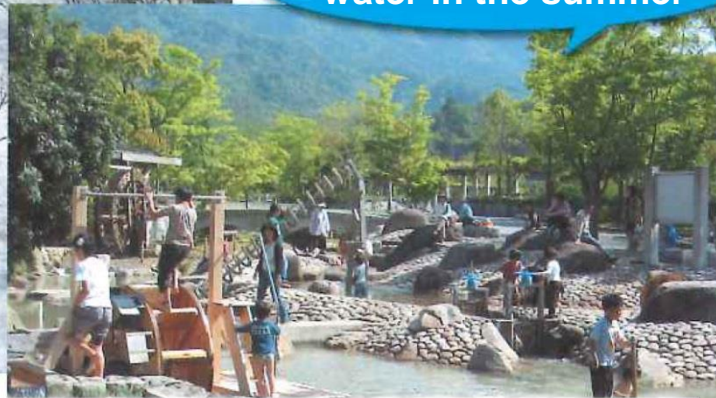
The Water Museum conveys to the next generation the history of how the people in Sanuki sought after water, struggled for it and finally obtained it.



Kagawa Yousui Commemorative Park



Enjoy playing in
water in the summer



A park where visitors can communicate with **water**, **greenery** and **flowers** in all seasons

Entrance Hall

"Fantaview" (Kagawa's geography and climate)

A boy on a dragon explains various factors for droughts that often occur in Kagawa in an easy-to-understand way.



Ascending Dragon and Descending Dragon (Two 18-meter sculptures)

At the main entrance, two huge dragons, one ascending to the sky and one descending from the sky, welcome visitors.



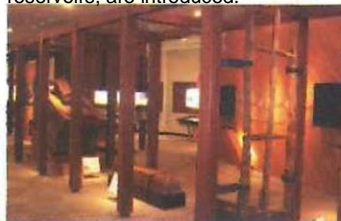
Theater (Lecture room)

"Water Story of Sanuki" (Showing time: 13 minutes 13 seconds)
Through the exchange between a boy in Kagawa and an old man living in the Yoshino River headwaters area, the film shows a variety of efforts people used for securing water and tells us the awareness for appreciating and cherishing water.



The Development of Sanuki Looking at its Water System

The wisdom and technologies to overcome recurring drought by our predecessors, who secured water through construction of many reservoirs, are introduced.



Daily Living and Water Utilization Technology

The structure and construction technology of reservoirs as well as the relationship between farmers and water are introduced using actual objects and videos.



▲ History of the construction of the Kagawa Canal

Permanent Exhibit Room



Observation Room (3F)



▲ A dragon welcomes visitors to the third floor.

Experience Section

Visitors can play with equipment using water and enjoy and learn about the history, the water-related festivals and the places of interest in Kagawa Prefecture using PCs.



▲ Learn about the mechanism of the Kagawa Canal with the model of the Canal.



▲ Multimedia of water and history



Water Plaza

Take a close look of the water of the Kagawa Canal surfacing to the ground in Kagawa Prefecture, which travels from the Ikeda Dam through the Asan Tunnel.

Little Stream Waterfall



Commemorative Plaza

The stone pattern in front of the Museum represents the way water in the Kagawa Canal taken from the Yoshino River is distributed to various areas in the prefecture.

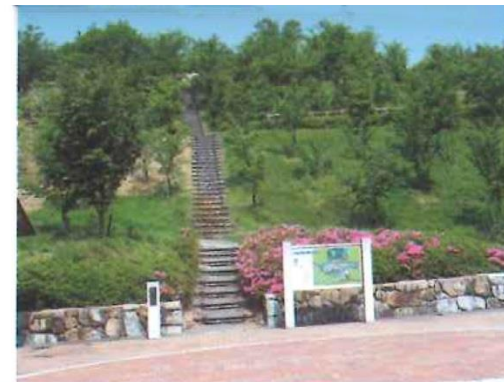
Flower Viewing Plaza

This plaza includes playground equipment for children and can be used as a place for relaxing while appreciating flowers.



Nature Observation Trail

You can stroll freely in the mountains to enjoy nature.

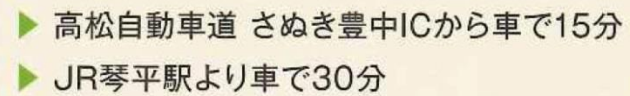


Event Plaza

The plaza includes a semi-circular stage against the backdrop of the East-West Diversion Works to hold various events.



-



<http://www.mizupark.com> E-mail info@mizupark.com